



Butyl Products Ltd.

Lingfield House, 11 Radford Crescent, Billericay,
Essex CM12 0DW, England.

T: +44 (0)1277 653281 **F:** +44 (0)1277 657921

E: enquiries@butylproducts.co.uk

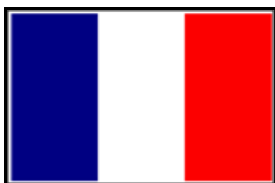
W: butylproducts.co.uk



Instructions for Installation and Repair
of Water Bladder Tank

English:

Pages 1 - 9



Instructions pour l'installation et la réparation
d'une citerne souple de stockage, installée
au sol ou sur un véhicule de transport

Français:

Page 10 - 18



Instrucciones para el montaje y reparación del
tanque de membrana para almacenaje de agua
en suelo y sobre un vehículo para su transporte

Español:

Página 19 - 27



Anweisungen für die Installation und Reparatur
des Wasserblasentanks

Deutsch:

Seite 28 - 36



Directors: J R Young C S Ball G Mitchell L Drumgold
Registered office: 11 Radford Crescent, Billericay, Essex
CM12 0DW, England.
Registration No: GB 3141465

XWB1

Manual no: 9

Revision no: 2



Butyl Products Ltd.

11 Radford Crescent, Billericay, Essex CM12 0DW, England

Tel: +44 (0)1277 653281 **Fax:** +44 (0)1277 657921

E-mail: enquiries@butylproducts.co.uk

www.[butylproducts.co.uk](http://www.butylproducts.co.uk)



Instructions for Installation and Repair of
Water Bladder Tank
both on Ground for Storage
and on Vehicle for Transport

Manufactured in the UK by Butyl Products Ltd

Index

2.	Index / Contents
3 - 4.	Site Selection and Installation
4 - 5.	For On Vehicle Platform Use
6.	Filling Bladder, Emptying Bladder, Re-Packing
6.	Maintenance Procedure
7 - 8.	Repair Instructions
9.	After Sales Service

For Ground Use

Site Selection and Preparation

- (1) Position the water bladder tank as close to final resting position as possible— mechanical handling may be used to achieve this.
- (2) Where further movement is required then a suitable valise bag is to be used and an assessment of manpower will be required taking product weight & distance of movement into account.
- (3) Select a site that is level and free from sharp objects, roots and vegetation.



X



✓

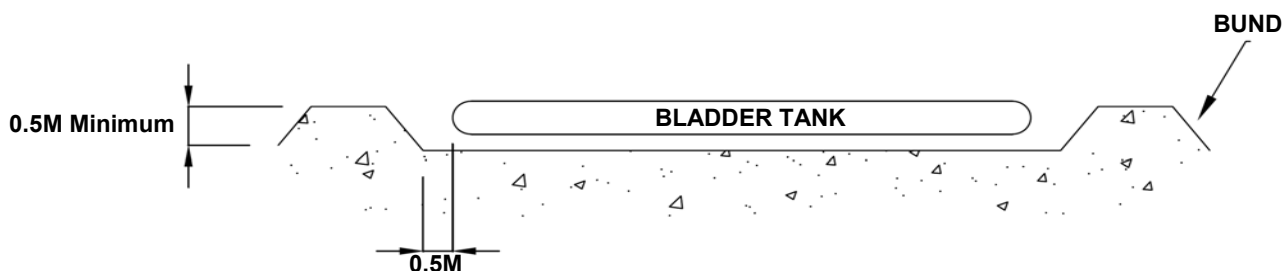
For bund lining go to *Step 3*.

- (4) When using a groundsheet
Carefully remove from box, unroll and position where tank is to be located.



- (5) When using a bund liner (suggested on larger bladders in particular)

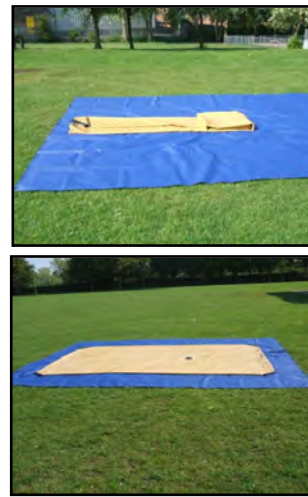
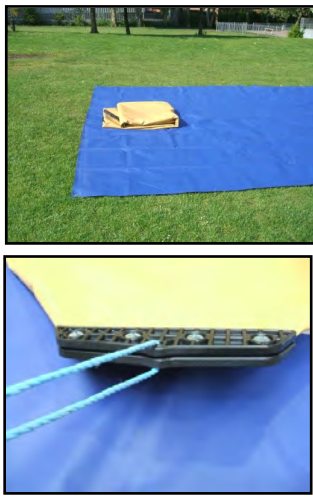
Dig an excavation 0.5m bigger all round than the tank in layflat mode. The depth of the bund must be at least 0.5m. This can be achieved by either digging a hole or making up earth banks to suit.



- (6) Carefully remove the bladder tank from box, roll out to present the main fill/empty port at the correct side for filling/emptying. Ensure the tank is free to fill without restriction. Tie ropes to the corners of the bladder to assist in pulling bladder flat (if bladder handles not fitted).

Warning: The bladder is folded from the centre for ease of positioning. Do not `drag` the bladder as this could cause mechanical damage to the bladder skin.

- (7) Where handles are fitted to the bladder these are to be used for unfolding & laying flat of bladder only



- (8) After checking compatibility of bladder fill point and hose assembly, connect the hose assembly to the fill point. For thread connections it is recommended that a strap wrench is used to hold the bladder skin fitting in position.

Warning: Using Stillson's or pump pliers to hold the bladder skin fitting could result in mechanical damage to the bladder skin.

Pre-fill checks

- Check all surfaces for damage.
- Check connector is closed if not to be used for filling.
- Check that the tank is located in the correct position for filling/discharging.
- Check that all loose items are repacked and stowed adjacent to tank (repair kit, etc.).
- Check vent valve is fitted to top fitting.

For On Vehicle or Platform Use - Only for use with special transport bladders up to 6m³

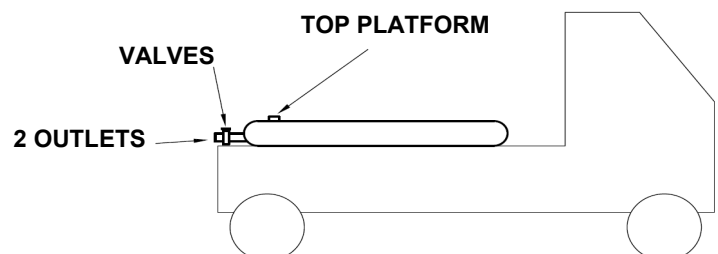
Vehicle Selection

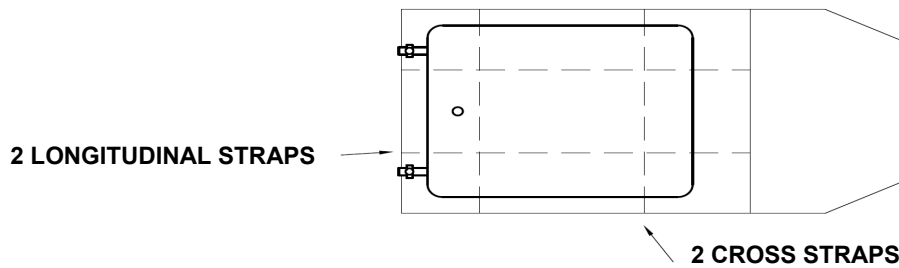
- The vehicle **must** have a carrying capacity of 2 tonne for every 1 tonne of water to be transported.
- The vehicle body must be able to accommodate the bladder laying flat and empty without overhang.
If the empty bladder overhangs the platform it cannot be used unless the vehicle has load-bearing side walls.
- As trucking water can cause load surging, special attention should be made to the vehicles stability.

Fitting the Bladder

- Check the vehicle body for any nails, sharp edges, etc., that could damage the bladder and remove.
- Lay out the groundsheet on the vehicle bed positioning as near as possible in the centre of the vehicle.
Then tie down using the corner eyelets.
- Unroll the bladder on to the groundsheet with fittings as shown.

Locate suitable positions for the straps and fit as shown.





- (4) Loosely fit holding straps across bladder, securing to vehicle body. The hook (see photograph) to be fixed to a secure part of the vehicle.
- (5) Fill bladder (see filling section).
- (6) Tighten straps as tight as possible to prevent any bladder movement.



NOTE:

- (1) Bladder should only be transported totally full or totally empty.
- (2) Bladder should only be filled or emptied under full supervision.
- (3) Only bladders up to 5,000 litres should be used for transportation.

Filling the Bladder

Ensure top vent is in position and open before filling.

If a valve is being used, ensure it is in the open position.

Warning

Pump water into the tank at a reasonable pressure, checking that no items become entangled during the pumping process, putting localised stress on the tank.

Support hose if necessary. Continue pumping until nominal volume has been metered in or until the surface of the tank becomes hard or water spills from the vent valve. Stop pumping, close valve and remove hose.

Tighten down restraints where appropriate making sure they are taut but without putting additional pressure on the tank. Conduct an inspection of the tank for leaks.

If the tank is to be left full for a long period, replace vent valve with plug.

NOTE:

It is strongly suggested that a plug is screwed into a ball valve to prevent ease of accidental or malicious opening when hose is disconnected



Emptying the Bladder

Ensure top vent is in position before emptying.

Remove plug, reconnect the hose, open ball valve and commence pumping.

Re-Packing

Ensure that the tank is empty and perfectly dry and that all fittings are secure.

Carefully roll the ends of the tank into the centre ensuring that all debris is removed from the tank surface during the folding operation.

Place the tank in the case. Clean groundsheet, roll up and place in case.

Tank Cleaning

Cleaning methods

The following notes should be observed concerning cleaning the tanks:-

- A mild water soluble cleaner and hot air can be used where appropriate. Neither should exceed 70°C.
- Cleaning by abrasion rather than wiping should be avoided.
- After cleaning, the tank must be left to fully dry before re-packing or re-filling.

Maintenance Procedure

(1) In Storage

Attention should be given to tanks as soon as they are received in the stores.

Inspect the tank for obvious damage and note for future attention:-

- i) Punctures
- ii) Major abrasions/damage
- iii) Insecure and damaged fittings

Either hang up the tank or place the tank on a convenient table or trolley.

Wash the tank out with a mild solution and then clean water.

Use air flow to dry out the tank thoroughly.

Do not put the tank into storage with any faults but investigate immediately any repair work necessary.

If the tank is satisfactory, fold up lightly and pack into a clean dry case.

(2) In Use

For ground mounted bladders:-

(a) Periodically check ground for subsidence, vegetation growth, etc.

For truck mounted bladders:-

(b) Before every journey check bladder security and strap fixings.

(c) Periodically check all parts for mechanical damage, wear and decline. Order new parts as necessary.

Repair Kit

The water bladder repair kit consists of:-

- 1 x Instruction Manual
 - 1 x Pressure roller
 - 2 x Sheets of sandpaper
 - 1 x Tube of adhesive
- (must be used within 6 months of breaking seal)
- Assortment of repair patches.



Water Bladder Repair Instructions

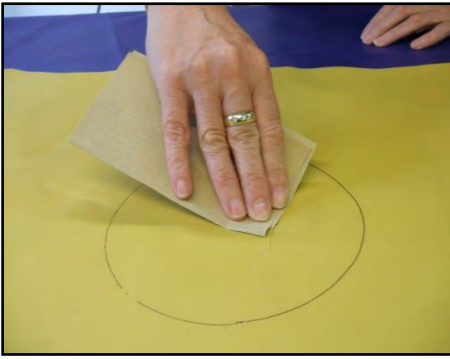
- (1) Bladder must be fully empty and dry prior to repair.
- (2) Cut a piece of the repair material to cover the damage leaving a 30mm wide overlap beyond the damaged area.



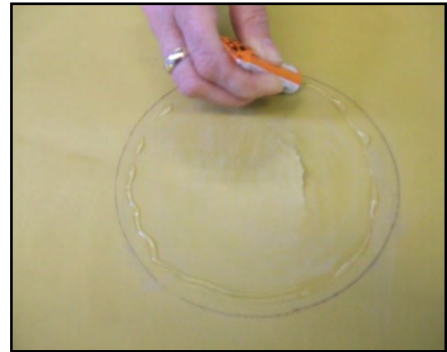
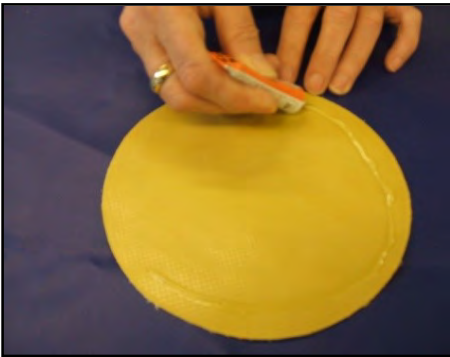
- (3) Place the patch in the final position and mark around it with a crayon on the bladder.



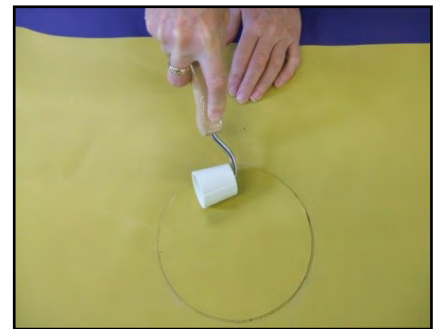
- (4) Using the sandpaper provided, abrade the mating areas of the patch and bladder.



- (5) Ensure the abraded area is clean and dry. Any residue must be cleaned off prior to attempt at repair.
- (6) Apply a thin layer of adhesive to both surfaces.



- (7) Leave for 5-20 minutes (dependent on ambient conditions) until the surface is tacky.
- (8) Bring the two surfaces together and apply pressure using the roller provided to ensure a good bond.



- (9) The adhesive must be left for 24 hours to dry before re-filling.

After Sales Service

Butyl Products Ltd. has built its reputation on providing a high quality and service. If for any reason you are not completely satisfied please contact our efficient and friendly team who will respond to your needs immediately.

Replacement parts and technical advice is also available by calling:-

Butyl Products Ltd.

Tel: + 44 (0)1277 653281

Fax: + 44 (0)1277 657921

E-mail: enquiries@butylproducts.co.uk

Web: www.butylproducts.co.uk